

URBAN PLUS 30

— By ITEMDesing Works Javier Cuñado —



■ **DESCRIPTION**

Back rest, polyamide (glass fibre) frame, elastic technical mesh composed by 64% polyester and 36% polyamide. Breathable.

Seat:

- Polypropylene (P.P) with 40 % fiber glass in a wide range of colours.

- Upholstered with an ergonomic padded interior in different finishes.

Ability to incorporate fibreglass into polypropylene (P.P) **arms** for reinforcement.

Frame made from 2 mm thick hot-rolled steel cylindrical tube, coated in epoxy with different finishes, 90 microns thickness. Different finishes: **Silver, white, black or chromed**. Includes protective stacking.

■ **BACK**

(SEE FINISHES AND FABRIC CARD LAST PAGE)

■ **SEAT**

POLYPROPYLENE



(SEE FINISHES AND FABRIC CARD LAST PAGE)

■ **ACCESSORIES**



Optional Hook on basket Ø 5 mm thickness with supports Ø 7 mm thickness. **Aluminum, white or black finish**



Optional writing tablet in 13 mm phenolic and 16 mm thick aluminized melamine, on the right or left hand side

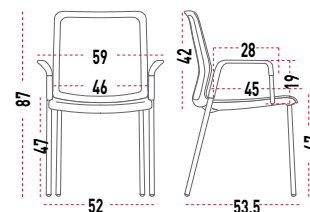
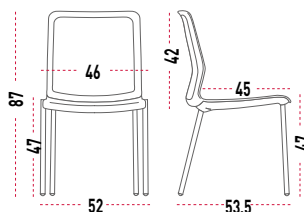


- ① Polyamide frame manufactured with glass fibre
- ② Models with and without polypropylene arms (P.P). **Optional** writing table in models without arms
- ③ Ergonomic seat in different finishes: polypropylene (5 mm) or upholstered
- ④ Cast aluminum framework, in white, black or aluminum finishes
- ⑤ Protective stacking
- ⑥ Steel cylindrical tube in different finishes: **Silver, white, black or chromed**
- ⑦ Graphite caps

■ **DIMENSIONS**

Total Height: 870 mm
Total Width: 450 mm
Total Depth: 535 mm

Seat Height: 470 mm
Seat Width: 460 mm
Seat Depth: 450 mm



Polypropylene (P.P) linking devices. 5 mm thickness



Stackable chairs

■ **DESCRIPTION**

Back rest, polyamide (glass fibre) frame, elastic technical mesh composed by 64% polyester and 36% polyamide. Breathable.

Seat:

- Polypropylene (P.P) with 40 % fiber glass in a wide range of colours.

- Upholstered with an ergonomic padded interior in different finishes.

Ability to incorporate fibreglass into polypropylene (P.P) **arms** for reinforcement.

Frame made from 2 mm thick hot-rolled steel cylindrical tube, coated in epoxy with different finishes, 90 microns thickness. Different finishes:

Silver, white or chromed.



■ **BACK**

(SEE FINISHES AND FABRIC CARD LAST PAGE)

■ **SEAT**

POLYPROPYLENE



(SEE FINISHES AND FABRIC CARD LAST PAGE)

■ **CASTORS**



Ø 45 mm solfit castors

- ① Polyamide frame manufactured with glass fibre
- ② Models with and without polypropylene arms (P.P)
- ③ Ergonomic seat in different finishes: polypropylene (5 mm) or upholstered
- ④ Cast aluminum framework, in white, black or aluminum finishes
- ⑤ Steel cylindrical tube in different finishes: **Silver, white or chromed**
- ⑥ Ø 45 mm solfit castors



■ **DIMENSIONS**

Total Height: 870 mm

Total Width: 520 - 590 mm

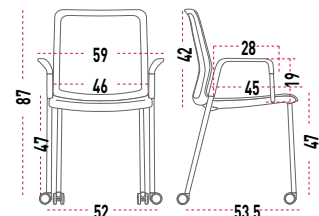
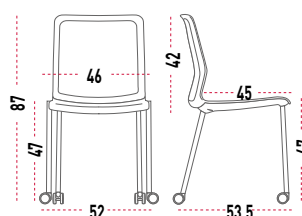
Total Depth: 535 mm

Seat Height: 470 mm

Seat Width: 460 mm

Seat Depth: 450 mm

■ **DIMENSIONS**



■ **DESCRIPTION**

Back rest, polyamide (glass fibre) frame, elastic technical mesh composed by 64% polyester and 36% polyamide. Breathable.

Seat: 10 mm thickness natural beech plywood lacquered sheets placed in perpendicular or transversal position. Upholstered with an ergonomic padded interior in different finishes.

Frame cantilever: Manufactured with warm laminated steel cylinder tube (Ø 20 mm), 1,5 mm thickness epoxy covered, available in different finishes, 90 micron thickness. Incorporate fibreglass into polypropylene (P.P) **arms** for reinforcement.



- ① Polyamide frame manufactured with glass fibre
- ② Model with polypropylene arms (P.P)
- ③ Upholstered seat with an ergonomic padded interior, in different finishes
- ④ Steel cylindrical tube in different finishes: **Silver, white, black or chromed**
- ⑤ Graphite caps

■ **BACK**

(SEE FINISHES AND FABRIC CARD LAST PAGE)

■ **SEAT**

NATURAL BEECH PLAYWOOD



(SEE FINISHES AND FABRIC CARD LAST PAGE)

■ **DIMENSIONS**

Total Height: 870 mm

Total Width: 520 mm

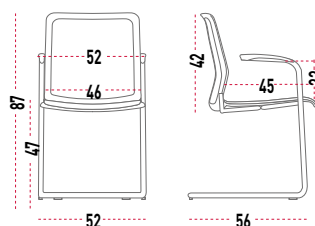
Total Depth: 560 mm

Seat Height: 470 mm

Seat Width: 460 mm

Seat Depth: 450 mm

■ **DIMENSIONS**

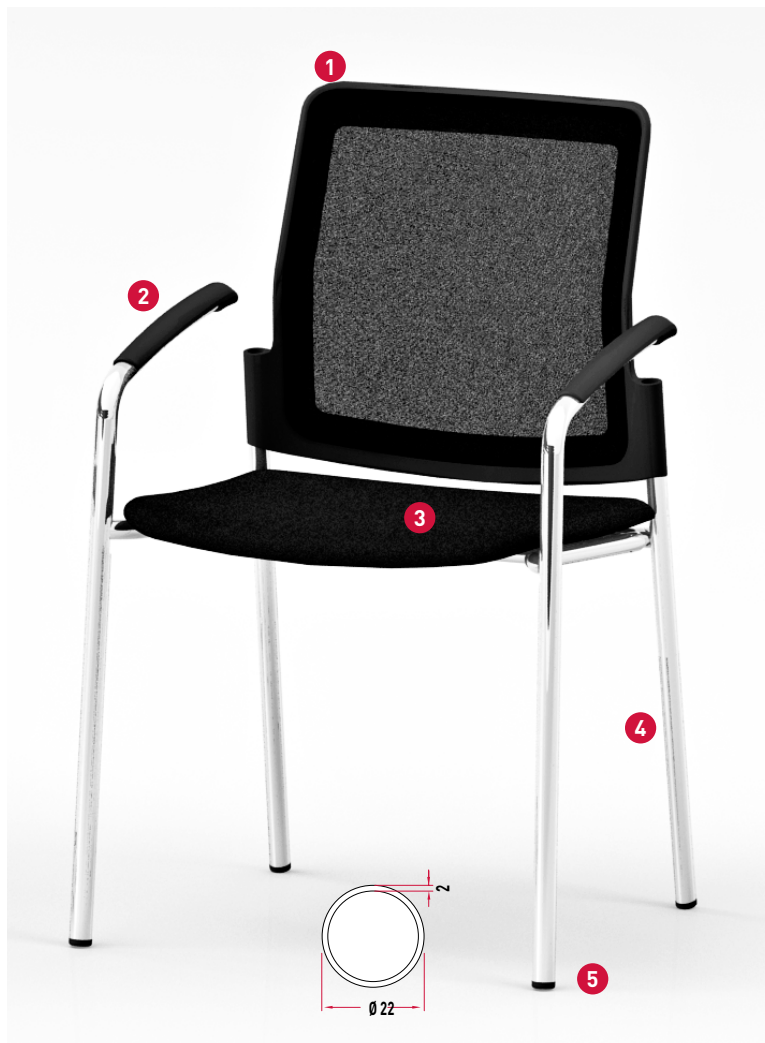


■ **DESCRIPTION**

Back rest, polyamide (glass fibre) frame, elastic technical mesh composed by 64% polyester and 36% polyamide. Breathable.

Seat: 10 mm thickness natural beech plywood lacquered sheets placed in perpendicular or transversal position. Upholstered with an ergonomic padded interior in different finishes.

4 legs: Manufactured with warm laminated steel cylinder tube (Ø 20 mm), 1,5 mm thickness epoxy covered, available in different finishes, 90 micron thickness. Incorporate fibreglass into polypropylene (P.P) **arms** for reinforcement.



- ① Polyamide frame manufactured with glass fibre
- ② Model with polypropylene arms (P.P)
- ③ Upholstered seat with an ergonomic padded interior, in different finishes
- ④ Steel cylindrical tube in different finishes: **Silver, white, black or chromed**
- ⑤ Graphite caps

■ **BACK**

(SEE FINISHES AND FABRIC CARD LAST PAGE)

■ **SEAT**

NATURAL BEECH PLAYWOOD



(SEE FINISHES AND FABRIC CARD LAST PAGE)

■ **DIMENSIONS**

Total Height: 870 mm

Total Width: 520 mm

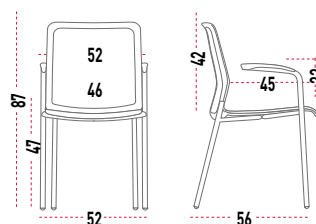
Total Depth: 560 mm

Seat Height: 470 mm

Seat Width: 460 mm

Seat Depth: 450 mm

■ **DIMENSIONS**



■ **DESCRIPTION**

Back rest:

polyamide (glass fibre) frame, elastic technical mesh composed by 64% polyester and 36% polyamide. Breathable.

Seat:

- Polypropylene (P.P) with 40 % fiber glass in a wide range of colours.
- Upholstered with an ergonomic padded interior in different finishes.

Arms: Ability to incorporate fibreglass into polypropylene (P.P) arms for reinforcement.

Frame: Self return: Swivel base self-return mechanism. Manufactured with warm laminated steel cylinder tube, moulded, flatten and conical shape (25 - 17 mm), 2,5 mm thickness epoxy covered with in 90 micron thickness, available in different finishes: **Silver, white or chromed.**

■ **BACK**

(SEE FINISHES AND FABRIC CARD LAST PAGE)

■ **SEAT**

POLYPROPYLENE



(SEE FINISHES AND FABRIC CARD LAST PAGE)

■ **BASES**



Steel shaped and tapered tube
Chromed finish - 52x52 cm.
Oscillating levels



Steel shaped and tapered tube
White Finish - 52x52 cm.
Oscillating levels



Steel shaped and tapered tube
Silver Finish - 52x52 cm.
Oscillating levels

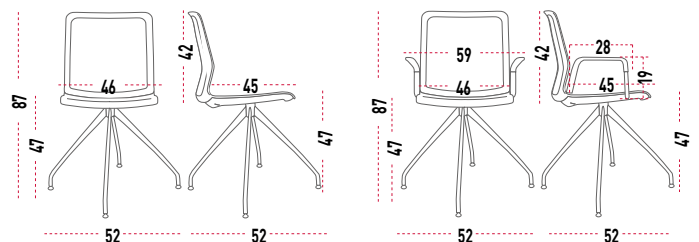


- ① Polyamide frame manufactured with glass fibre
- ② Models with and without polypropylene arms (P.P)
- ③ Ergonomic seat in different finishes: polypropylene (5 mm) or upholstered
- ④ Cast aluminum framework, in white, black or aluminum finishes
- ⑤ Self-return system
- ⑥ Steel cylinder tube, moulded, flatten and conica, in different finishes: **Silver, white or chromed**
- ⑦ Graphite caps



■ **DIMENSIONS**

Total Height: 870 mm **Seat Height:** 470 mm
Total Width: 520 - 590 mm **Seat Width:** 460 mm
Total Depth: 520 mm **Seat Depth:** 450 mm



■ **DESCRIPTION**

Back rest: polyamide (glass fibre) frame, elastic technical mesh composed by 64% polyester and 36% polyamide. Breathable.

Seat:

- Polypropylene (P.P) with 40 % fiber glass in a wide range of colours.
- Upholstered with an ergonomic padded interior in different finishes.

Arms: Ability to incorporate fibreglass into polypropylene (P.P) arms for reinforcement.

Frame: 4 Feet base: Base Ø 67,5 cm with 4 cross supports, Central support Swivel. Manufactured with warm laminated steel cylinder tube (Ø 50 mm), 1,5 mm thickness epoxy covered, available in different finishes, 90 micron thickness. 4 cross supports with antiskid pad.



■ **BACK**

(SEE FINISHES AND FABRIC CARD LAST PAGE)

■ **SEAT**

POLYPROPYLENE



(SEE FINISHES AND FABRIC CARD LAST PAGE)

■ **BASES**



Black Steel Cylinder Tube
4 cross supports base - Chrome finish
52x52 cm Antiskid pads



White Steel Cylinder Tube
4 cross supports base - White finish
52x52 cm Antiskid pads



Silver Steel Cylinder Tube
4 cross supports base - Silver finish
52x52 cm Antiskid pads



Black Steel Cylinder Tube
4 cross supports base - Black finish
52x52 cm Antiskid pads

- ① Polyamide frame manufactured with glass fibre
- ② Models with and without polypropylene arms (P.P)
- ③ Optional upholstered seat with an ergonomic padded interior, in different finishes
- ④ Cast aluminum framework, in white or aluminum finishes
- ⑤ Central support Swivel
- ⑥ Steel cylinder tube Ø 50 mm and 1,5 mm thickness, **black, aluminized and white finishes**
- ⑦ Base Ø 67,5 cm, with 4 cross supports, made of aluminized finish **aluminum, white, black and black/polishedd**. The support arms have antiskid pad



■ **DIMENSIONS**

Total Height: 870 mm

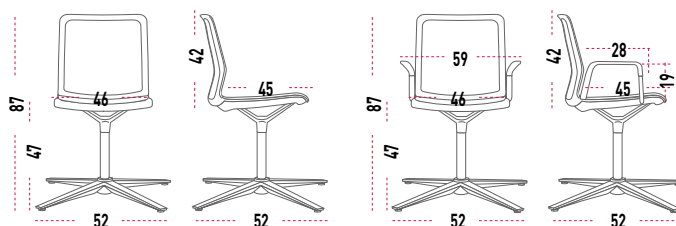
Total Width: 520 - 590 mm

Total Depth: 52 mm

Seat Height: 470 mm

Seat Width: 460 mm

Seat Depth: 450 mm



■ **DESCRIPTION**

Back rest:

polyamide (glass fibre) frame, elastic technical mesh composed by 64% polyester and 36% polyamide. Breathable.

Seat:

- Polypropylene (P.P) with 40 % fiber glass in a wide range of colours.
- Upholstered with an ergonomic padded interior in different finishes.

Arms: Ability to incorporate fibreglass into polypropylene (P.P) arms for reinforcement.

Frame: Swivel base: 5 spoke swivel base of cast aluminum or polyamide with fiber glass and standard silent wheels. Gas lift. Optional soft hole weight control castor in models with aluminium base.

■ **BACK**

(SEE FINISHES AND FABRIC CARD LAST PAGE)

■ **SEAT**

POLYPROPYLENE



(SEE FINISHES AND FABRIC CARD LAST PAGE)

■ **BASES**



Polished aluminum - Ø 67,5 cm
Black soft castors - Ø 65 mm
Optional: soft hole weight control castor - Ø 65 mm



White aluminum - Ø 67,5 cm
Black soft castors - Ø 65 mm
Optional: soft hole weight control castor - Ø 65 mm



Aluminized aluminum - Ø 67,5 cm
Dark Grey soft castors - Ø 65 mm
Optional: soft hole weight control castor - Ø 65 mm



Black polyamide - Ø 67,5 cm
Black soft castors - Ø 65 mm



White polyamide - Ø 67,5 cm
Black soft castors - Ø 65 mm



- ① Polyamide frame manufactured with glass fibre
- ② Models with and without polypropylene arms (P.P)
- ③ Ergonomic seat in different finishes: polypropylene (5 mm) or upholstered
- ④ Cast aluminum framework, in white, black or aluminum finishes
- ⑤ Gas lift
- ⑥ Base of 67,5 cm in finishes of **black polyamide, white polyamide, silver aluminum, white aluminium and polished aluminum**
- ⑦ Soft castors - Ø 65 mm



■ **DIMENSIONS**

Total Height: 840-950 mm

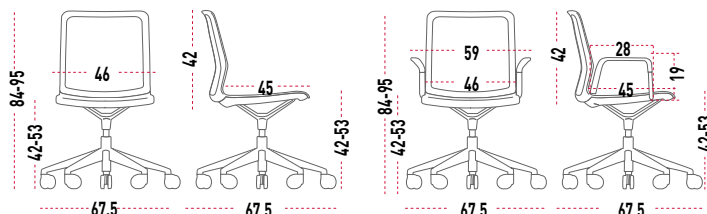
Total Width: 675 mm

Total Depth: 675 mm

Seat Height: 420-530 mm

Seat Width: 460 mm

Seat Depth: 450 mm



■ **DESCRIPTION**

Back rest: polyamide (glass fibre) frame, elastic technical mesh composed by 64% polyester and 36% polyamide. Breathable.

Seat:

- Polypropylene (P.P) with 40 % fiber glass in a wide range of colours.
- Upholstered with an ergonomic padded interior in different finishes.

Arms: Ability to incorporate fibreglass into polypropylene (P.P) arms for reinforcement.

Frame: Swivel base: 5 spoke swivel base of cast aluminum or polyamide with fiber glass and standard silent wheels. Gas lift. **Knee Tilt Mechanism:** Allows a backrest inclination of 10° and pressure regulation 5 positions. Optional soft hole weight control castor in models with aluminium base.

■ **BACK**

(SEE FINISHES AND FABRIC CARD LAST PAGE)

■ **SEAT**

POLYPROPYLENE



(SEE FINISHES AND FABRIC CARD LAST PAGE)

■ **BASES**



Polished aluminum - Ø 67,5 cm
Black soft castors - Ø 65 mm
Optional: soft hole weight control castor - Ø 65 mm



White aluminum - Ø 67,5 cm
Black soft castors - Ø 65 mm
Optional: soft hole weight control castor - Ø 65 mm



Aluminized aluminum - Ø 67,5 cm
Dark Grey soft castors - Ø 65 mm
Optional: soft hole weight control castor - Ø 65 mm



Black polyamide - Ø 67,5 cm
Black soft castors - Ø 65 mm



White polyamide - Ø 67,5 cm
Black soft castors - Ø 65 mm



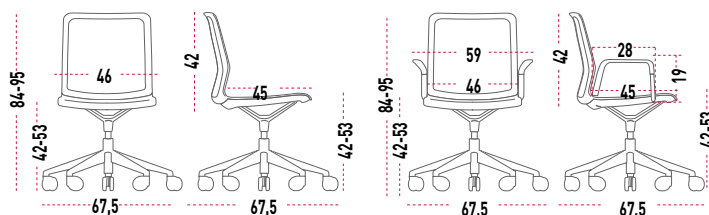
- ① Polyamide frame manufactured with glass fibre
- ② Models with and without polypropylene arms (P.P)
- ③ Upholstered seat with an ergonomic padded interior, in different finishes
- ④ Cast aluminum framework, in white or aluminum finishes
- ⑤ Gas lift
- ⑥ **Knee Tilt Mechanism:** Allows a backrest inclination of 10° and pressure regulation 5 positions
- ⑦ Base of 67,5 cm in finishes of **black polyamide, white polyamide, silver aluminum, white aluminium and polished aluminum**
- ⑧ Soft castors - Ø 65 mm



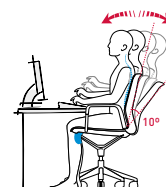
■ **DIMENSIONS**

Total Height: 840-950 mm
Total Width: 675 mm
Total Depth: 675 mm

Seat Height: 420-530 mm
Seat Width: 460 mm
Seat Depth: 450 mm



■ **KNEE TILT MECHANISM**



Allows a backrest inclination of 10° and pressure regulation 5 positions

■ **DESCRIPTION**

Back rest: polyamide (glass fibre) frame, elastic technical mesh composed by 64% polyester and 36% polyamide. Breathable.

Seat:

- Polypropylene (P.P) with 40 % fiber glass in a wide range of colours.

- Upholstered with an ergonomic padded interior in different finishes.

Frame: Swivel base: fixed to a moulded aluminium carcasse 4 mm thickness. Swivel base polished aluminium Ø 67,5 cm and 5 stars 6 cm thickness. Black glides. Gas lift for height adjustment.

■ **BACK**

(SEE FINISHES AND FABRIC CARD LAST PAGE)

■ **SEAT**

POLYPROPYLENE



(SEE FINISHES AND FABRIC CARD LAST PAGE)

■ **BASES**



Swivel black polyamide base - 67,5 cm
Polypropylene (PP) black caps



Swivel white polyamide base - 67,5 cm
Polypropylene (PP) black caps



Swivel white aluminum base - 67,5 cm
Polypropylene (PP) black caps



Swivel polished aluminum base - 67,5 cm
Polypropylene (PP) black caps



- ① Polyamide frame manufactured with glass fibre
- ② Ergonomic seat in different finishes: polypropylene (5 mm) or upholstered
- ③ Cast aluminum framework, in white, black or aluminum finishes
- ④ Gas lift
- ⑤ Chromed steel footrest. Curved tube Ø 18 mm, 1,5 mm thickness
- ⑥ Swivel base Ø 67,5 cm finished in **black polyamide, white polyamide, white aluminium or polished aluminium**
- ⑦ Black PP and rubber caps 60 mm



■ **DIMENSIONS**

Total Height: 1.040-1.200 mm

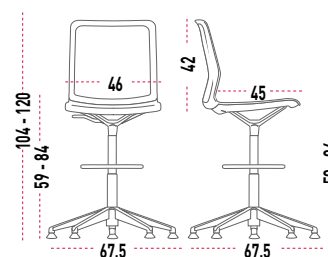
Seat Height: 590 - 840 mm

Total Width: 675 mm

Seat Width: 460 mm

Total Depth: 675 mm

Seat Depth: 450 mm





MATERIALS

Maximum use of materials to eliminate and minimize scraps. Use of recyclable and recycled materials in those components that do not affect the functionality and durability.

RECYCLED MATERIALS



PRODUCTION

Maximum optimization of energy use. Minimal environmental impact. Last generation technological systems. Zero discharge of wastewater. No VOC coatings. Processes free of heavy metals, phosphates, OC and COD.

100%
RECYCLABLE
ALUMINIUM, STEEL
& WOOD



TRANSPORT

Detachable systems. Volumes that facilitate the optimization of space. Maximum reduction of energy consumption by transport.

100%
RECYCLABLE
PACKAGE AND THINNER
FREE



USE

Quality and warranty. Long lasting. Replacements available.

EASY
TO CLEAN
AND MAINTAIN



DISPOSAL

Waste reduction. Supplier-manufacturer packaging reuse system. Components are easy to be separated. Inks in packaging are water-based, without solvents.

RECYCLABLE MATERIALS

■ **CERTIFICATES AND REFERENCES**

The different programmes get points in different environmental categories to get the LEED certificate (sustainability, material and resources, water, energy and atmosphere, inner environment quality, innovation and design).



■ **STANDARDS**

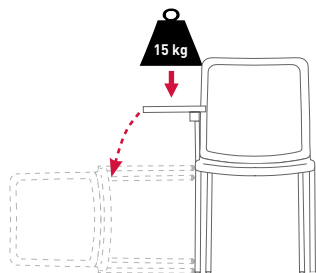
URBAN has passed tests done in our technical department as well as the tests done in **AIDIMA** the Technological Institute for furniture.

The tests correspond to:

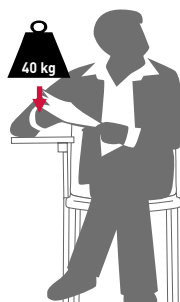
Confident office chair. Standard applied

- **UNE-EN 15373:07.** Furniture. Resistance, long lasting, security. Requirements for non domestic use seating.
- **UNE-EN 1728:01.** Domestic furniture - Seating - Test methods for the determination of strength and durability.
- **UNE-EN 16139:13.** Furniture. Resistance, long lasting, security. Requirements for non domestic use seating.

■ **4 LEGGED CHAIR WITH WRITING TABLET**



With weight more than 15 kg.
Without a seated user, the chair overturns.



With a seated user, maximum
 resistance of writing tablet 40 kg.

FABRIC

TECHNICAL MESH BACK REST

■ SEAT

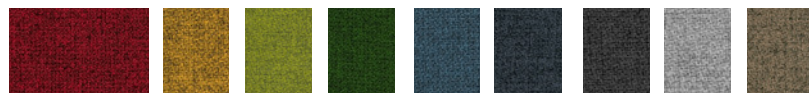
GROUP T-C



GROUP N



GROUP M - MELANGE



GROUP M - STEP



GROUP H - HARLEQUIN

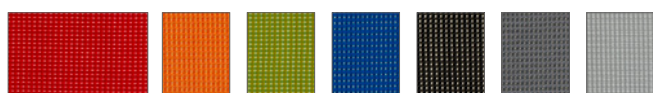


GROUP G - OMEGA 3D



■ BACK

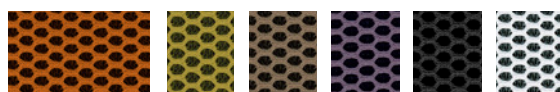
NET



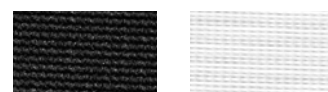
GROUP H - HARLEQUIN



GROUP G - OMEGA 3D



STRING



Black

White