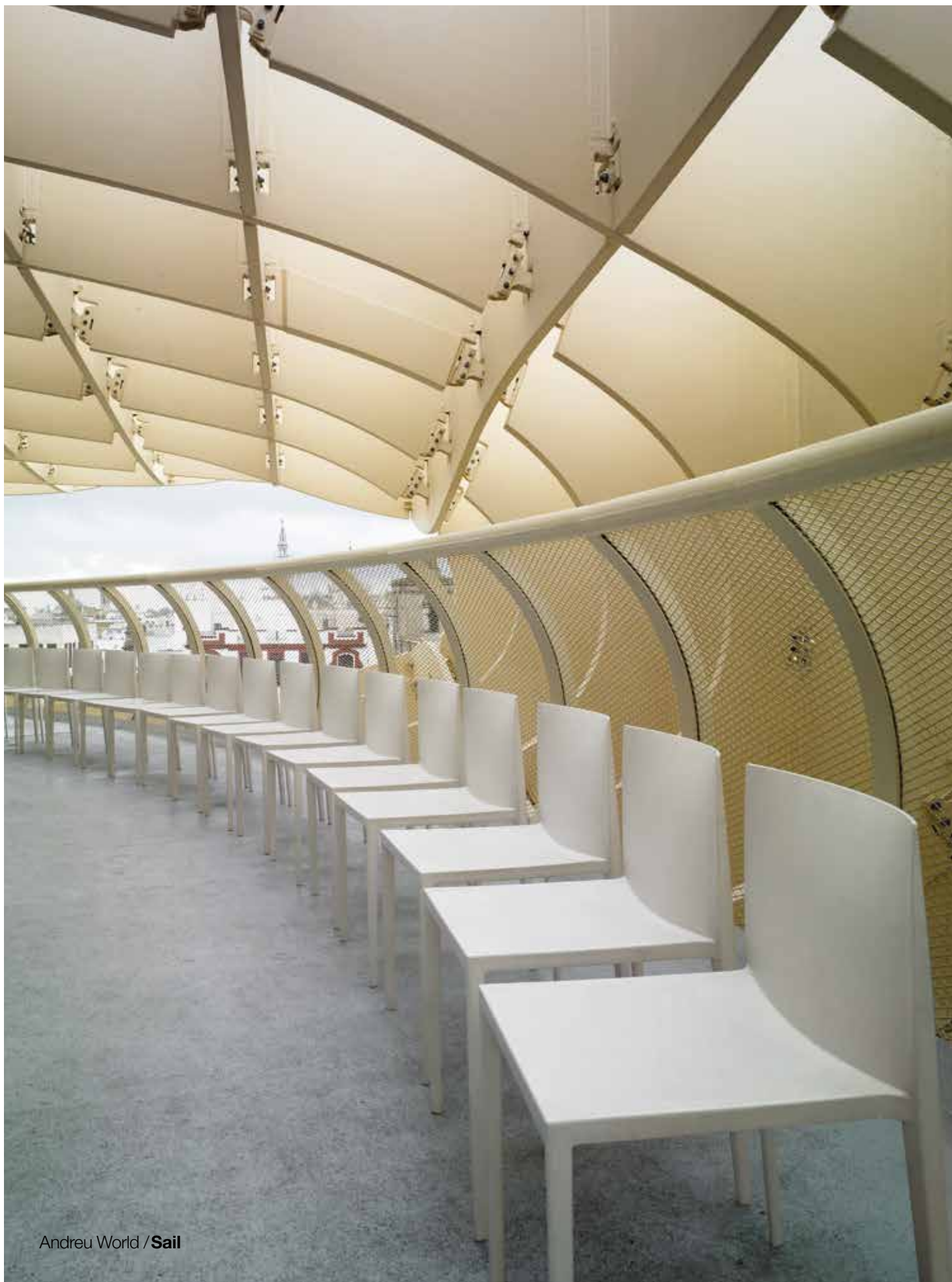


Andreu World

Sail

by Piergiorgio Cazzaniga





**Waiting area
Zona de espera**

◀ SI 1245

Stackable chair in thermo-polymer.
Suitable for outdoor use.
Silla apilable de termopolímero.
Válido para uso en exterior.

▶ SI 1245

**Workspace
Espacio de trabajo**

▼ SI 1245



Workspace
Espacio de trabajo
▼ SI 1245

Stackable chair in thermopolymer. Suitable for outdoor use.
Silla apilable de termopolímero. Válido para uso en exterior.

► SI 1245

Cafeteria
Cafetería
► SI 1245





◀ **SI 1248**
Stackable chair with oak board.
Silla apilable de tablero de roble.

Cafeteria
Cafetería
▼ **SI 1248**

Cafeteria
Cafetería
▶ **SI 1245**
Stackable chair in thermo-polymer.
Suitable for outdoor use.
Silla apilable de termopolímero.
Válido para uso en exterior.



Andreu World / **Sail Wood**



Andreu World / **Sail**

▼ **SI 1246**

Chair fully upholstered
in leather.
Silla tapizada en cuero.

Residential

Hogar

► **SI 1246**



Sail

Piergiorgio Cazzaniga

Stackable side chair made of thermo-polymer or solid oak wood. A fully upholstered version in leather is also available.



SI 1245



SI 1246
Leather version



SI 1248
Wood version

Certificates
Certificados

Quality-Resistance
Calidad-Resistencia

UNE EN 16139:2013
ANSI-BIFMA x 5.1
GIS LEVEL 5

Sail

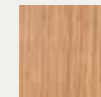
Piergiorgio Cazzaniga

Silla apilable de termopolímero o de madera maciza de roble. Disponible versión completamente tapizada en cuero.

Wood finish Oak
Acabados madera Roble



306



307



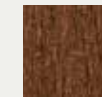
378



322



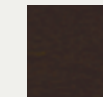
336



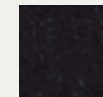
364



372

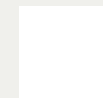


369



381

Wood lacquers
Lacas madera



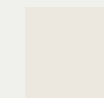
641



380



661



645L
NCS2005-Y20R
Sand
Arena



646L
NCS 4005-Y20R
Basalt grey
Gris basalto



642L
RAL 3013
Cayenne red
Rojo cayena



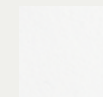
605L
NCS S 6502-B
Dark grey
Gris oscuro



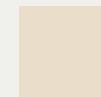
606L
RAL 1005
Yellow mustard
Amarillo mostaza

RAL-NCS

Hide leather finish
Acabado de cuero



4050



4051



4052



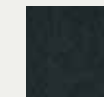
4056



4053



4054



4055



4057

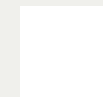


4058



4061

Thermo-polymer finish
Acabado de termopolímero



6000
RAL 9003
White
Blanco



6002
NCS2005-Y20R
Sand
Arena



6012
NCS S 4005-Y20R
Basalt Grey
Gris Basalto



6003
RAL 3013
Cayenne Red
Rojo Cayena



6006
RAL 9005
Black
Negro



6013
NCS S 6502-B
Dark Grey
Gris Oscuro